



# Partner Directory

SCHOOL-BASED SERVICES AT NO COST



# MESSAGE FROM THE DIRECTOR



The Wellness Programs department is responsible for facilitating the coordination of an array of partnerships that provide on campus services at no cost to students and families. Wellness Programs support schools to establish partnerships with city, county and community-based organizations that address the needs of the whole school, whole community and whole child. We know that health, mental health, wellness, and safety are essential for effective teaching and learning. Wellness Programs is committed to supporting the instructional program by reducing and eliminating barriers to student learning and promoting success toward the goals of 100% graduation and zero dropouts.

The Wellness Programs Partner Directory consists of partners that have active agreements with Los Angeles Unified School District. In order for community-based agencies or non-District personnel to render health, mental health, and non-health services on a school campus at no cost, a completed and executed agreement Memorandum of Understanding (MOU) or Operating Agreement (OA) and Service Delivery Application (SDA) must be on file with the Division of Student Health and Human Services. Each Local District has been allocated an Organization Facilitator to develop agreements with school site personnel and partners. Organization Facilitators are responsible for verifying the completion of documentation, ensuring all appropriate signatures are secured, and maintaining a database record of all executed no-cost agreements.

The purpose of this resource is to provide school leaders with a list of partners that have an agreement with the District that may be able to provide services to the school community. Wellness Programs is dedicated to establishing partnerships that serve the needs of schools and our Organization Facilitators are eager to assist with meeting those needs.

Sincerely,  
William Celestine,  
Director, Wellness Programs

# ESTABLISHING PARTNERSHIPS

The Division of Student Health and Human Services (SHHS) has the responsibility to provide support to the instructional program and reduce barriers to the academic achievement of students. Schools are encouraged to collaborate with city, county and community-based health and human services for improved child, youth, and family outcomes.

In order for a community-based agency or non-District personnel to render no-cost health and non-health services on a school campus, a completed and executed Agreement should be completed with the assistance of an Organization Facilitator. All district administrators should review BUL – 076705 Establishing No-Cost Health, Non-Health and Mental Health Services MOUs and Agreements on School Campuses, before entering into partnerships with any community-based agency or non-District personnel. Below is an outline of the process developed to establish no-cost partnerships along with the contact information for Organization Facilitators to assist school leaders.

Memorandum of Understanding (MOU) and Operating Agreement (OA) Process:

- 1) Provider and school determine a need for a school based service.
- 2) Provider and school principal contact Wellness Programs Organization Facilitator (OF).
- 3) Wellness Programs O.F. develops MOU or Operating Agreement with provider and school personnel.
- 4) Provider completes MOU and Service Delivery Application (SDA).
- 5) Provider and school principal review MOU and SDA and sign documents as evidence of approval.
- 6) Provider submits signed MOU, SDA and accompanying documents to Wellness Programs O.F.
- 7) O.F. reviews MOU, SDA and documentation and signs in approval.
- 8) O.F. secures necessary signatures from Local District and Central offices, including Office of General Counsel.
- 9) O.F. notifies school and provider of MOU/SDA approval and when services may begin.

# ORGANIZATION FACILITATORS

## REGION EAST



### Region East

Anna Salazar  
[ams9146@lausd.net](mailto:ams9146@lausd.net)



### Region East

Crisalia Vallejan Aranibar  
[crisalia.aranibar@lausd.net](mailto:crisalia.aranibar@lausd.net)



### Region East

Martha Godinez  
[mgodinez@lausd.net](mailto:mgodinez@lausd.net)



### Region East

Linda Cortez  
[lcc4531@lausd.net](mailto:lcc4531@lausd.net)

---

## REGION SOUTH



### Region South

Ricardo Lopez  
[ricardo.l.lopez@lausd.net](mailto:ricardo.l.lopez@lausd.net)



### Region South

Lorna Herrera  
[lorna.herrera@lausd.net](mailto:lorna.herrera@lausd.net)



### Region South

Silvia Navarro  
[silvia.navarro@lausd.net](mailto:silvia.navarro@lausd.net)

---

## REGION WEST



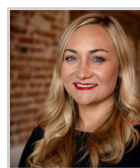
### Region West

Maral Mary Sousani  
[maral.sousani@lausd.net](mailto:maral.sousani@lausd.net)



### Region West

Kenya Carter  
[kxc3004@lausd.net](mailto:kxc3004@lausd.net)



### Region West

Megan Brown  
[megan.brown@lausd.net](mailto:megan.brown@lausd.net)

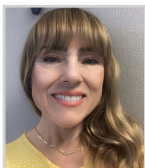
---

## REGION NORTH



### Region North

Harry Bedevian  
[hbedevia@lausd.net](mailto:hbedevia@lausd.net)



### Region North

M. Isabel Castaneda  
[mic0648@lausd.net](mailto:mic0648@lausd.net)



### Region North

Nubia Martinez  
[nubia.martinez@lausd.net](mailto:nubia.martinez@lausd.net)



### Region North

Isabel Vaquero  
[isabel.vaquero@lausd.net](mailto:isabel.vaquero@lausd.net)

---

## WELLNESS POLICY



### Wellness Policy

Jill Chandler  
[jmc6149@lausd.net](mailto:jmc6149@lausd.net)



### Wellness Policy

Maggie Yu-DiPasquale  
[myu1@lausd.net](mailto:myu1@lausd.net)



### Wellness Policy

Jhamed Babatunde-Bey  
[jbabatun@lausd.net](mailto:jbabatun@lausd.net)

# TABLE OF CONTENTS

---

**ACADEMIC & COLLEGE READINESS SERVICES** ..... 2 - 4

**DENTAL SERVICES** ..... 5

**DROPOUT PREVENTION SERVICES** ..... 6 - 8

**ENRICHMENT SERVICES** ..... 9 - 11

**MEDICAL SERVICES** ..... 12 - 13

**MENTAL HEALTH SERVICES** ..... 14 - 23

**MENTORING SERVICES** ..... 24 - 26

**NUTRITION SERVICES** ..... 27

**SUBSTANCE ABUSE PREVENTION SERVICES** ..... 28 - 29

**VISION SERVICES** ..... 29

The of the services are provided by the partners. Please contact your Organization Facilitators and review the specific agreements for details regarding the partners and available services.

Wellness Programs continues to establish new partnerships with community based organizations, please log onto [lausd.org/wellnessprograms](https://lausd.org/wellnessprograms) to view the most current list of “community partners” with active MOU agreements.

# ACADEMIC & COLLEGE READINESS SERVICES

---

## **826LA**

[www.826la.org](http://www.826la.org)

Supporting students ages 6-18 with their creative and expository writing skills, and to helping teachers inspire their students to write.

## **ASIAN YOUTH CENTER**

[www.aycla.org](http://www.aycla.org)

Empower low-income, immigrant, and at-risk youth, of all communities, to overcome barriers to success through the provision of culturally and linguistically competent education, employment, and social services.

## **CALIFORNIA STATE UNIVERSITY, DOMINGUEZ HILLS EDUCATIONAL TALENT SEARCH AND UPWARD BOUND PROGRAMS**

[www.csudh.edu/ssss](http://www.csudh.edu/ssss)

The CSU Dominguez Hills TRIO Programs (TRIO) are Federal outreach and student services programs designed to identify and provide services for individuals from disadvantaged backgrounds. TRIO includes programs targeted to serve and assist low-income individuals, first-generation college students, and individuals with disabilities to progress through the academic pipeline from middle school to post baccalaureate programs. TRIO also includes a training program for directors and staff of TRIO projects.

## **CALIFORNIA STATE UNIVERSITY, DOMINGUEZ HILLS TORO AUXILIARY PARTNERS CENTER FOR STEM EDUCATION (CISE) PROGRAM**

[www.csudh.edu/cise](http://www.csudh.edu/cise)

CISE staff engage LAUSD schools in learning how to code through courses and clubs and in participating in the App Design Challenge. The program offers tutoring in class and after school.

## **CALIFORNIA STATE UNIVERSITY, LOS ANGELES UPWARD BOUND PROGRAMS**

[www.calstatela.edu/univ/stuaffrs/ubp](http://www.calstatela.edu/univ/stuaffrs/ubp)

Upward Bound is a college preparatory program that provides eligible high school students rigorous academic support and guidance toward a post-secondary education. Currently, Cal State LA houses two Upward Bound programs. Upward Bound offers academic instruction in mathematics, laboratory sciences, composition, literature, and foreign languages. Upward Bound Math/Science focuses on strengthening math and science skills with the goal of preparing participants in careers in math and science.

## **CHILDREN YOUTH AND FAMILY COLLABORATIVE (CYFC)**

[www.cyfcla.org](http://www.cyfcla.org)

The goal of all CYFC™ services programs is to ensure our youth gain the skills, information and motivation necessary to receive their high school diploma and graduate from college or obtain employment to transition successfully into independent adulthood. CYFC™ services has designed an Academic, Remediation, Intervention, and Support Services Education Model for Foster Youth (A.R.I.S.S.E™) program, which provides tutoring, academic support, and support services for foster youth.

## **COALITION FOR RESPONSIBLE COMMUNITY DEVELOPMENT (CRCD)**

[www.coalitionrcd.org](http://www.coalitionrcd.org)

CRCD is a youth-centered approach to serving young people. Their program assists youth and young adults to further their education, pursue career pathways, and meet basic needs. The program offers academic support, college readiness, and career pathway exploration.

# ACADEMIC & COLLEGE READINESS SERVICES

---

## COMMUNITY DEVELOPMENT TECHNOLOGIES CENTER (CDTECH)

[www.cdtech.org](http://www.cdtech.org)

Provides youth leadership programs at high schools to increase educational attainment and career development among 14-18 year old youth.

## EMILY SHANE FOUNDATION

[www.emilyshane.org](http://www.emilyshane.org)

Offering mentor services to struggling and failing middle school students in the mainstream classroom.

## FULFILLMENT FUND

[www.fulfillment.org](http://www.fulfillment.org)

Through classroom instruction, mentoring, one-on-one college counseling and experiential learning opportunities, they open young people's eyes to the possibility of higher education, and change their beliefs about what they are capable of achieving.

## INNER CITY STRUGGLE

[www.innercitystruggle.org](http://www.innercitystruggle.org)

Provide academic services, mentoring, and support systems to students in their pathway to higher education by way of United Students and Sembrando Scholars.

## L.A OASIS WISE & HEALTHY AGING

[www.tutoring.oasisnet.org](http://www.tutoring.oasisnet.org)

In partnership with school districts to pair volunteer tutors with children in grades K-5 to build their reading skills, self-esteem, and positive attitudes toward learning.

## PROYECTO PASTORAL PROMESA BOYLE HEIGHTS

[www.proyectopastoral.org/promesa-boyle-heights](http://www.proyectopastoral.org/promesa-boyle-heights)

Proyecto Pastoral's belief is if they strengthen community leadership and capacity, build a strong and coordinated continuum of academic and wellness support, focus on key transition points, and provide additional targeted support for children and families, then they can dramatically increase college and career readiness for students and transform the Boyle Heights community.

## PUENTE LEARNING CENTER

[www.puente.org](http://www.puente.org)

A bridge to opportunity by enabling children to develop a lifelong love of learning, helping parents succeed in their role as their child's first and most important teachers, supporting youth as they move toward high school graduation and beyond.

## SCHOOL ON WHEELS

[www.schoolonwheels.org](http://www.schoolonwheels.org)

In conjunction with the Homeless Education Program counselor, provides volunteer one-on-one and group tutoring for identified homeless students on school campuses in grades K-12.

## SOUTHEAST COMMUNITY FOUNDATION

[www.secfoundation.org](http://www.secfoundation.org)

Southeast Community Foundation is a non-profit organization enabling K-5 students from low-income families to get small group tutoring support to secure a better future for students in the Southeast part of Los Angeles.



# ACADEMIC & COLLEGE READINESS SERVICES

---

## **TELACU**

[www.telacu.com](http://www.telacu.com)

Provides students comprehensive academic support and guidance to graduate from high school, enroll in and complete postsecondary education. Access to college campus visits throughout the State, instructions on successfully navigating the college admissions, and enrollment processes.

## **THE UNIVERSITY CORPORATION – CALIFORNIA STATE UNIVERSITY, NORTHRIDGE**

[www.csun.edu](http://www.csun.edu)

Assist participants with receiving pre-college program services to support their academic success and prepare for post-secondary opportunities upon high school graduation.

## **UNITED FRIENDS OF THE CHILDREN**

[www.unitedfriends.org](http://www.unitedfriends.org)

United Friends of the Children offers their Scholars program to support foster youth to adulthood by offering educational services. These services include educational counseling and advocacy, workshops and college tours, academic preparation, enrichment activities, and college preparatory events.

## **UCLA’S VICE-PROVOST’S INITIATIVE FOR PRE-COLLEGE SCHOLARS (VIPS)**

[www.aap.ucla.edu/units/vip-scholars/#welcome](http://www.aap.ucla.edu/units/vip-scholars/#welcome)

VIPS is a partnership with UCLA that prepares historically underrepresented students in 11 high schools to become competitively eligible for admission to UCLA and other flagship universities, and to encourage pursuit of graduate and professional education using a social justice framework and holistic approach.

## **UNIVERSITY OF SOUTHERN CALIFORNIA (USC) TRIO PROGRAMS**

[www.communities.usc.edu/educational-partnerships/trio-programs](http://www.communities.usc.edu/educational-partnerships/trio-programs)

The federally funded TRiO programs were created to motivate and support low-income and first-generation, minority students in progressing through the academic pipeline from middle school through college. USC TRiO includes Upward Bound, Upward Bound Math-Science, and two Educational Talent Search programs.

## **VOLUNTEERS OF AMERICA LOS ANGELES (VOALA) UPWARD BOUND AND TALENT SEARCH**

[www.voala.org/services/youth](http://www.voala.org/services/youth)

The primary focus of the Educational Talent Search program is to identify low-income, first-generation students who are at risk of dropping out of high school. The goal of Upward Bound is to increase the rate at which participants complete secondary education and enroll in and graduate from post-secondary education.

## **YOU RUN THIS TOWN FOUNDATION (YRTTF)**

[www.yrttf.org](http://www.yrttf.org)

YRTTF provides high school students with career development enrichment activities that include resume building, career preparation, financial planning, college planning, professional and civic engagement.



# DENTAL SERVICES

---

## **ALTA MED HEALTH SERVICES CORPORATION**

[www.altamed.org](http://www.altamed.org)

They make it easy to see a dentist, with complete dental offices built into many of their health centers. In addition to X-rays, cleanings, and visual exams, they also provide more intensive services.

## **BIG SMILES DENTAL**

[www.bigsmlilesdental.org](http://www.bigsmlilesdental.org)

Their in-school dental program saves you time and provides a safe and comfortable place for your child to receive gentle dental care from licensed local professionals. Dental care includes a complete dental exam, x-rays, cleaning, fluoride and sealants when necessary, and in some cases, restorative care such as fillings.

## **EISNER PEDIATRIC & FAMILY MEDICAL CENTER**

[www.eisnerhealth.org/dental](http://www.eisnerhealth.org/dental)

In order to reach more at-risk children with dental care, they operate two school-based portable dental clinics in the L.A.U.S.D at San Pedro Elementary and Nevin Elementary. They offer cleanings, exams, sealants and minor fillings to their school-based patients and refer more complicated dental issues to their main dental sites or to each patient's own primary dental provider.

## **NORTHEAST VALLEY HEALTH CORPORATION**

[www.nevhc.org](http://www.nevhc.org)

Provides medical, dental and behavioral health services through experienced and dedicated professionals specializing in various fields of expertise.

## **SAMOHA DDS, INC. (MILES FOR SMILES)**

This program is available to students who are in one of these three categories of dental coverage: 1) have Medicaid 2) have MoHealthNet (formerly MC+) or are uninsured and qualify for free/reduced meals. Miles for Smiles is operated by a professional staff that will provide onsite dental services to eligible children. Students who qualify will be given an initial exam and dental treatment will be provided as determined by the examining dentist. Details of the exam and care given will be available for parents to keep for their records.

## **ST. JOHN'S WELL CHILD & FAMILY CENTER**

[www.wellchild.org](http://www.wellchild.org)

An independent 501(c)(3) community health center. They serve patients of all ages through a network of Federally Qualified Health Centers and school-based clinics that span the breadth of Central and South Los Angeles and Compton. In addition to providing a broad array of primary care services, they place a high priority on developing supportive services to address families' educational, socio-economic, and mental health needs.

## **VALLEY COMMUNITY HEALTHCARE**

[www.valleycommunityhealthcare.org](http://www.valleycommunityhealthcare.org)

Provides general medical care, dental care, optometry, women's health, prenatal care, pediatric care, teen health, behavioral health services, and longer-term counseling.

# DROPOUT PREVENTION

---

## **ALMA FAMILY SERVICES (GRYD)**

[www.almafamilyservices.org/youth-development-services](http://www.almafamilyservices.org/youth-development-services)

Since 11/2009, Alma Family Services is the lead agency for a collaborative Gang Reduction Youth Development Program (GRYD) serving youth and families who reside in the Boyle Heights/Hollenbeck area of the City of Los Angeles. The GRYD program represents a historic effort on the part of the City of Los Angeles Mayor's Office to reduce crime rates and gang membership in specific communities with a high degree of gang activity and violence. All services provided by Alma Family Services program address factors that are known to increase a youth's risk of gang involvement.

## **ASIAN AMERICAN DRUG ABUSE PROGRAM (GRYD)**

[www.aadapinc.org/youth-and-family-programs-yfp/](http://www.aadapinc.org/youth-and-family-programs-yfp/)

Funded by the city of Los Angeles Mayor's office to provide comprehensive gang reduction and youth development to youth ages 10-15 years of age in South Los Angeles and the Crenshaw Corridor

## **CENTINELA YOUTH SERVICES**

[www.cys-la.org](http://www.cys-la.org)

Operates innovative programs that are proven to increase student performance, reduce school dropout rates, help preserve families, reduce gang involvement, youth violence and crime. The Juvenile Arrest Diversion Program is an intervention strategy that redirects youth away from formal processing in the juvenile justice system, while still holding them accountable for their actions. The goal of their services is to hold youth accountable, to give them the opportunity to take responsibility for their actions and make amends for the harm that they caused, and to empower them to peacefully resolve conflicts so they can succeed in school and become productive adults.

## **CHILDREN'S INSTITUTE, INC.**

[www.childrens institute.org/services](http://www.childrens institute.org/services)

CII partners with a select group of schools for the Neighborhood School Program, offering comprehensive campus-wide trauma-informed services and supports for all students and parents, including after-school and enrichment activities, parent workshops, and family resource centers.

## **CHRISTIAN ASSEMBLY CHURCH (KIDS HOPE PROGRAM)**

[www.cachurch.com/ministries/kingdom/localoutreach/aboutkidshope](http://www.cachurch.com/ministries/kingdom/localoutreach/aboutkidshope)

Kids Hope USA is a parachurch program that helps to connect partner churches/institutions to public elementary schools; providing structure, training, support, and resources designed for use in public schools. Through the Christian Assembly Church Kids Hope USA mentoring program, elementary students meet once a week for one hour with a consistent adult.

## **CRYSTAL STAIRS**

[www.crystalstairs.org](http://www.crystalstairs.org)

Provides services such as Pregnant Teen Peer Support Groups, parenting and leadership training, and activities that foster decision making and stress management.

## **EL CENTRO DEL PUEBLO**

[www.ecdpla.org](http://www.ecdpla.org)

The Rampart and Northeast Los Angeles Gang Reduction and Youth Development (GRYD) program is part of an intensive effort to foster youth development and reduce the influence of street gangs in the lives of our youth. El Centro Del Pueblo is the lead agency for the GRYD program and is currently working with families implementing prevention services.

# DROPOUT PREVENTION

---

## **GARDENA POLICE DEPARTMENT JUVENILE JUSTICE & INTERVENTION PROGRAM**

[www.gardenapd.org/juvenile-justice-and-intervention-program](http://www.gardenapd.org/juvenile-justice-and-intervention-program)

A program created to educate, support, and improve the lives of at-risk youth to become productive and contributing members of society.

## **HELUNA HEALTH (GRYD)**

[www.helunahealth.org](http://www.helunahealth.org)

GRYD Intervention case management services are designed for gang-involved young people between the ages of 14 and 25 years old. GRYD Intervention service providers make referrals to services (e.g. mentoring, counseling, tattoo removal, etc.) and provide assistance and support for each of their participants. The program is designed to increase access to, and engagement in, positive activities and build connections to prosocial networks through a program that includes individual participants meetings and participants' family meetings.

## **INNER CITY VISIONS**

[www.innercityvisions.org](http://www.innercityvisions.org)

Provides services such as prevention of the exploitation of vulnerable children and youth, gang prevention, mentoring and support for children and families living in high crime/gang infested areas.

## **LATINO EQUALITY ALLIANCE (LEA)**

<http://www.latinoequalityalliance.org>

Provides public education workshops on LGBTQ issues to students, parents, and professionals in an on-campus educational setting. LEA works in Latino communities to decrease homophobia and increase support for LGBTQ issues.

## **LAPD HOLLENBECK POLICE ACTIVITIES LEAGUE (PAL)**

[www.lapdhollenbeckpal.org](http://www.lapdhollenbeckpal.org)

Get It Straight is a 12-week delinquency prevention and intervention training program for youth ages 10 to 17. Parents are required to attend each weekly session with their child. Participants are involved in a comprehensive curriculum combining classroom instruction, personal development, conflict resolution skills, and communication exercises. Field trips to juvenile detention centers are routinely scheduled to give youth a first-hand look at the inevitable consequences of criminal activity. Parents are required to attend a separate 10-week parenting skills training called the Parent Project that will support their success.

## **NATIONAL HEALTH FOUNDATION**

[www.nationalhealthfoundation.org](http://www.nationalhealthfoundation.org)

Empowers teen mothers, supports healthy pregnancies, births, peer group workshops and community resource linkages. Implemented on-campus at partnering school sites, the program provides a safe, supportive space to teen parents with the ultimate goal of empowering youth to avoid additional, unplanned pregnancies, improve health outcomes for themselves and their unborn child, and achieve high school graduation and/or completion of a GED. Weekly educational modules include appropriate healthcare for self, child, nutrition, exercise for pregnancy, fetal, infant development, educational, and vocational planning.

# DROPOUT PREVENTION

---

## **NEW DIRECTIONS FOR YOUTH (NDY)**

[www.ndfy.org](http://www.ndfy.org)

A comprehensive youth development agency that provides mental health services and programs to more than 3,000 at-risk youth and families annually. NDY has provided critically needed services to more than 200,000 youth, the majority of whom come from very low-income families residing in underserved geographic areas including North Hollywood, Van Nuys, Panorama City, North Hills, the economic Enterprise Zone of Pacoima, Sun Valley, and contiguous areas.

## **P. F BRESEE**

[www.bresee.org](http://www.bresee.org)

The mission is to battle poverty by empowering youth and families in Los Angeles with the skills, resources, and relationships necessary to thrive. To pursue this mission, Bresee offers diverse services under three program divisions: Youth Services, Family Services and Gang Prevention.

## **THE WATTS LABOR COMMUNITY ACTION COMMITTEE**

[www.wlcac.org](http://www.wlcac.org)

A non-profit, community-based, human social services organization dedicated to improving the quality of life for South Los Angeles residents. The Gang Reduction and Youth Development Program provides a variety of services for families encouraging overall community wellness, individual and group self-sufficiency.

## **TOBERMAN NEIGHBORHOOD CENTER (GRYD)**

[www.toberman.org](http://www.toberman.org)

Gang Prevention identifies and works with youth at risk between the ages of 10-15 years old. Our staff strives to provide the best support services to the youth and their families with emphasis on avoiding gangs and all related criminal activities. The communities served are Harbor Gateway, San Pedro, Harbor City and Wilmington. Families are offered a variety of free services to inspire change for a better future. Such services include but are not limited to: case management, mentoring, individual and family counseling, youth group meetings, educational, cultural and recreational settings, sports and other activities. Gang Intervention provides specialized intervention counselors and case managers who mediate disputes and maintain the peace involving local gangs. With the goal of moving clients beyond gangs, our specialist provides wrap-around services such as counseling, case management, reentry services and employment support.

## **VOLUNTEERS OF AMERICA LOS ANGELES**

[www.voala.org](http://www.voala.org)

The Gang Reduction Youth Development (GRYD) program is to reduce gang violence and gang involvement by promoting positive youth development, assisting gang and at-risk youth 14-25 years of age and their families with access to a wide range of supportive services, creating safer, healthier communities.

# ENRICHMENT SERVICES

---

## **AMERICA SCORES LA**

[www.lascores.org](http://www.lascores.org)

America Scores LA is an urban youth development program that brings students together to play soccer, write, and perform community service. This helps them engage in their health, school, and community, providing students in under-resourced neighborhoods with the tools to succeed in school and life.

## **ASIAN AMERICANS ADVANCING JUSTICE – LA**

[www.advancingjustice-la.org](http://www.advancingjustice-la.org)

A joint project of Advancing Justice-Los Angeles and Advancing Justice-Asian Law Caucus in San Francisco, engages in statewide policy advocacy that furthers civil rights for Asian Americans, Native Hawaiians and Pacific Islanders and all communities of color. The organization also provides youth development centers, mentoring, and leadership training to high school students.

## **ATHLETES IN THE MAKING**

[www.athletesinthemaking.org](http://www.athletesinthemaking.org)

Visits various elementary schools, in all school districts, and conducts hour long sessions which consist of various drills that many professional and amateur athletes use on a day to day basis such as dribble drills for basketball, kicking drills for soccer, fielding drills for baseball and puck passing for hockey.

## **CHICAS VERDES**

[www.chicasverdes.org](http://www.chicasverdes.org)

Chicas Verdes is an after-school garden program. Their vision is to help create a world where young people understand the connection they have to nature and each other and are prepared to live up to the responsibilities of being a good global citizen. They do this by building socially minded leaders through foster young peoples' connection to nature.

## **CHILDREN'S INSTITUTE, INC.**

[www.childrensstitute.org/services](http://www.childrensstitute.org/services)

Children's Institute partners with a select group of schools for the Neighborhood School Program, offering comprehensive campus-wide trauma-informed services and supports for all students and parents, including after-school and enrichment activities, parent workshops, and family resource centers.

## **DANCE AND DIALOGUE**

[www.danceanddialogue.org](http://www.danceanddialogue.org)

Dance and Dialogue uses dance and social emotional practices along with evidence based social skills as a tool to support better communication to provide personal and social changes for 3rd to 12th grade students in the most at risk communities.

## **LOS ANGELES COUNTY MUSEUM OF ART (LACMA)**

[www.lacma.org](http://www.lacma.org)

Integrated school-based program intended to enrich LAUSD's curriculum by creating art lessons, professional development for teachers and community workshops by way of reproductions based on LACMA's collection for children in grades K-8.

## **NEIGHBORHOOD YOUTH ACHIEVERS**

[www.nyachievers.org/home-neighborhood-youth-achievers](http://www.nyachievers.org/home-neighborhood-youth-achievers)

After-school program that includes reading, math, and self esteem building and enrichment for PK to 5th grade youth.

## **PEACE PLAYERS**

[www.peaceplayers.org](http://www.peaceplayers.org)

Through basketball programming, peace education, and leadership development, PeacePlayers empowers youth to build peaceful and equitable societies.

# ENRICHMENT SERVICES

---

## **THE LOS ANGELES DRAMA CLUB**

[www.losangelesdramaclub.com](http://www.losangelesdramaclub.com)

Successfully built an ongoing artistic community of children/youth who, through the creative process of working with Shakespeare, have found a passion, a purpose, and a safe place to express themselves and gain self-worth from their collective accomplishments.

## **OASIS CENTER INTERNATIONAL**

[www.oasiscenterintl.org](http://www.oasiscenterintl.org)

An Arts-based Community Outreach that provides various types of arts related programs and events to young people, with great emphasis on servicing the most under-resourced youth. Through this platform, OASIS cultivates creative fun in film (media), visual, performing arts and design build.

## **SHAREFEST**

[www.sharefestinc.org](http://www.sharefestinc.org)

Believing that a community's greatest asset is its youth, Sharefest is committed to mentoring youth to reach their fullest potentials. With the right cultivation of values, critical thinking skills, and opportunities, today's youth are empowered to be tomorrow's leaders who bring solutions and positive change their communities need.

## **SPIRIT AWAKENING FOUNDATION**

[www.spiritawakening.org](http://www.spiritawakening.org)

Spirit Awakening is an arts-based nonprofit dedicated to helping underserved youth and children in the juvenile justice system realize their value and self-worth. Since 1995 they have been teaching the unheard the power of positive and productive expression through creative writing, visual arts, improvisation, and meditation

## **STREET SOCCER USA**

[www.streetssoccerusa.org](http://www.streetssoccerusa.org)

After-school soccer program for vulnerable/at risk youth to improve well-being, health and physical fitness.

## **THE FLOURISH FOUNDATION (DBA VERSA-STYLE)**

[www.versastyledance.org](http://www.versastyledance.org)

Provides hip hop dance instruction after school and during in school workshops supervised by a certificated teacher. The instruction includes foundational/fundamental movement training in the various vocabularies of hip hop and street dance styles, as well as the historical/cultural significance of these movements.

## **THE TORCH FOUNDATION**

[www.thetorchfoundation.training](http://www.thetorchfoundation.training)

Conducts transformational leadership workshops for teens, ages 13-17. The two-day workshops provide a safe, engaging, and inspirational environment for profound self-discovery and growth, creating a lasting foundation for teens to build full and enriching lives.

## **TRIDENT SWIM FOUNDATION**

[www.tridentswimfoundation.org](http://www.tridentswimfoundation.org)

The Swimmer Scholar Program provides academic and aquatics to under-resourced communities at no cost. Through both structured swim practices and after school study sessions participants will learn the core principles of discipline, self-confidence and team work. The program is designed to encourage high school graduation, college attendance, and career development.

# ENRICHMENT SERVICES

---

## UNIVERSITY OF SOUTHERN CALIFORNIA ATHLETICS COMMUNITY OUTREACH PROGRAM

[www.usctrojans.com/sports/outreach](http://www.usctrojans.com/sports/outreach)

Promote student wellness and achievement by means of education and exposure to the experiences and lifestyle of USC student-athletes through participation in USC's Athletics Community Outreach Program.

## YMCA OF METROPOLITAN LOS ANGELES, GROWING YOUNG MINDS

[www.ymcala.org/programs/youth-programs/youth-classes](http://www.ymcala.org/programs/youth-programs/youth-classes)

Provides after school academic, recreational, and educational enrichment services. Program includes tutoring and homework assistance, physical activities, games, critical thinking activities, nutrition education, and arts & crafts.

## YOU RUN THIS TOWN FOUNDATION

[www.yrttf.org](http://www.yrttf.org)

Provides underserved communities with enrichment programs, work-study grants, scholarships, and community partner engagement projects with the goal of developing the next generation of leaders.

## YOUNG STORYTELLERS

[www.youngstorytellers.com](http://www.youngstorytellers.com)

Students receive mentoring in a group setting by entertainment industry professionals who help them write a story thus engaging their creativity through the art of storytelling. Students will be given the opportunity to direct and film their own short film based on their story.

## YOUTH YOGA INC.

[www.youthyoga.com](http://www.youthyoga.com)

Provides a series of YOGA instruction sessions to high school students during physical education class.



# MEDICAL SERVICES

---

## **CEDARS-SINAI MEDICAL CENTER – COACH FOR KIDS & THEIR FAMILIES**

[www.cedars-sinai.org/community/programs/coach-for-kids.html](http://www.cedars-sinai.org/community/programs/coach-for-kids.html)

Cedars-Sinai created COACH for Kids and Their Families®, a program of the Cedars-Sinai Maxine Dunitz Children's Health Center. COACH provides no-cost health and social services to underserved communities in Los Angeles. On a regular basis, two COACH mobile medical units travel to schools, shelters, public housing developments and neighborhood facilities in communities across 28 Los Angeles zip codes, providing the highest quality care.

## **DIGNITY HEALTH–CALIFORNIA HOSPITAL MEDICAL CENTER**

[www.dignityhealth.org/socal/locations/californiahospital](http://www.dignityhealth.org/socal/locations/californiahospital)

They define health as more than an absence of disease. The center believes caring for the whole person and realizing whole health is best achieved by providing for the physical, mental, spiritual and social needs of every patient we see.

## **EISNER PEDIATRIC & FAMILY MEDICAL CENTER**

[www.eisnerhealth.org/medical](http://www.eisnerhealth.org/medical)

Eisner Health's school-based family planning program is a safe place where students can receive confidential and personal care including testing, treatment and counseling, free of charge. Their school-based family planning programs are located at Metropolitan High School, Los Angeles High School and Santee Education Complex. Students can schedule two types of visits: (1) non-clinical visits which include pregnancy tests, contraception counseling and distribution of

condoms, lubricants and emergency contraception and (2) clinical visits which can include full physical exams, sexually transmitted disease testing and treatment, contraception counseling for prescriptions, and pregnancy testing. Clinics do not need parental permission to talk to students under the Family PACT program.

## **NORTHEAST COMMUNITY CLINIC (NECC)**

[www.northeastcommunityclinics.com](http://www.northeastcommunityclinics.com)

Providing primary and preventative healthcare services since 1971 to the low-income, uninsured and underserved residents of Los Angeles County. NECC's goal is to eliminate health disparities through the promotion of health education and disease prevention. In addition to primary care, they also provide counseling, mental health, referrals and other supportive services through coordination of community resources for you and your family.

## **NORTHEAST VALLEY HEALTH CORPORATION**

[www.nevhc.org](http://www.nevhc.org)

Provides medical, dental and behavioral health services through experienced and dedicated professionals specializing in various fields of expertise.

## **PLANNED PARENTHOOD LOS ANGELES**

[www.plannedparenthood.org/planned-parenthood-los-angeles](http://www.plannedparenthood.org/planned-parenthood-los-angeles)

Provides convenient and affordable access to a comprehensive range of quality reproductive health care and sexual health information, through patient services, education and advocacy.

# MEDICAL SERVICES

---

## **ST. JOHN'S WELL CHILD & FAMILY CENTER**

[www.wellchild.org](http://www.wellchild.org)

St. John's Well Child and Family Center (SJWCFC) is an independent 501(c)(3) community health center. SJWCFC serves patients of all ages through a network of Federally Qualified Health Centers and school-based clinics that span the breadth of Central and South Los Angeles and Compton. In addition to providing a broad array of primary care services, they place a high priority on developing supportive services to address families' educational, socio-economic, and mental health needs.

## **UCLA BLOOD AND PLATELET CENTER**

[www.uclahealth.org/programs/gotblood](http://www.uclahealth.org/programs/gotblood)

Blood and platelet donation collection services. The UCLA Blood & Platelet Center is committed to providing potent, pure, and safe blood components for our patients.

## **UNIVERSITY MUSLIM MEDICAL ASSOCIATION-UMMA COMMUNITY CLINIC**

[www.ummaclinic.org](http://www.ummaclinic.org)

UMMA emphasizes the need for regular health maintenance visits, which include routine prevention screenings, immunizations, and wellness evaluations. Patients are provided education and support to optimize their total health and well-being. In most cases, patients are evaluated by a regular primary care provider, and typically provided any necessary medication at either no cost or low cost depending upon their ability to pay. If a patient requires more advanced tests or specialty care, UMMA will provide an in-house referral to their volunteer specialists or a referral to a local county medical facility.

## **VALLEY COMMUNITY HEALTH CARE**

[www.valleycommunityhealthcare.org](http://www.valleycommunityhealthcare.org)

Valley Community Healthcare provides general medical care, dental care, optometry, women's health, prenatal care, pediatric care, teen health, behavioral health services, and longer-term counseling. Through the Patient Portal, enrolled patients connect online to request appointments, prescription refills and access their medical records.

## **WATTS HEALTHCARE CORPORATION**

[www.wattshealth.org](http://www.wattshealth.org)

Preventive services promoting health maintenance and education include: cancer screening, tobacco control, substance abuse prevention, tuberculosis control, immunizations, maternal and child health, and nutrition education.

# MENTAL HEALTH SERVICES

---

## AIRPORT MARINA COUNSELING SERVICES

[www.airportmarina.org](http://www.airportmarina.org)

Affordable, community-based mental health services, including child and family therapy, parenting classes, adult and child psychiatry, support groups and crisis intervention.

## ALAFIA MENTAL HEALTH INSTITUTE

(California Institute of Health & Social Services, Inc)

[www.cihssinc.org](http://www.cihssinc.org)

Provides access to targeted services for children identified as having mental health problems and emotional disturbances. Prevents placement disruptions and increases stability of the child in the home, school, and community.

## ALMA FAMILY SERVICES

[www.almafamilyservices.org](http://www.almafamilyservices.org)

Mental Health Services for children and adolescents are focused on youth who are experiencing significant emotional difficulties. Services may include individual, family, group psychotherapy, medication support and/or case management. The children's mental health project emphasizes linkage and close collaboration with the child's and family's support system. This may include schools, the Los Angeles County Regional Centers, Department of Mental Health and Department of Children and Family Services. In addition Alma has a central role in the Integrated School Health Center project in Roosevelt High School.

## ALTA MED

[www.altamed.org](http://www.altamed.org)

In school behavioral health services include individual short term counseling, stress management, grief & loss, and referrals for long term care.

## AMANECER COMMUNITY COUNSELING SERVICES

[www.amanecerla.org](http://www.amanecerla.org)

As a community-based nonprofit organization, the agency provides a wide range of personalized, bilingual/bicultural, behavioral health care and intervention services at no cost to children and parents/caregivers. The agency specializes in school-based counseling services. The agency also provides service to victims of domestic violence.

## ASIAN PACIFIC COUNSELING AND TREATMENT CENTERS

[www.apctc.org](http://www.apctc.org)

Provides vital services to adults, older adults, adolescents, and children who are dealing with a wide range of mental health and social problems. Most of these individuals come from the following Asian Pacific communities: Cambodian, Chinese, Japanese, Korean, Laotian, Pilipino, Thai and Vietnamese. While the focus of APCTC has been on serving the needs of Asians and Pacific Islanders in need, the Centers have also extended their services to non-Asian individuals and families.

## AVIVA FAMILY AND CHILDREN'S SERVICES

[www.avivacenter.org](http://www.avivacenter.org)

Therapeutic services for children and youth ages birth to 21. Aviva's integrated areas of service make up a continuum of care that addressed emotional, social and other therapeutic services and guidance to at-risk children and families in three main program areas: Wraparound Services, Community Mental Health Services and Foster Family and Adoption Services.

# MENTAL HEALTH SERVICES

---

## **BAYFRONT YOUTH AND FAMILY SERVICES**

[www.bayfrontyfs.org](http://www.bayfrontyfs.org)

Bayfront provides high quality, evidence-based care lead by qualified licensed practitioners of the healing arts to support the individualized needs of each child/adolescent. Bayfront ensures all direct-care personnel are fully educated and informed of the nuances of treating people with past histories of severe trauma. All therapeutic program planning and treatment is guided by treating the condition (fear, anxiety, depression) over the symptom (acting out, self-isolation, self-harm).

## **BRIDGES, INC.**

[www.bridgesrehab.org](http://www.bridgesrehab.org)

BRIDGES Inc. is a non-profit organization providing counseling, housing options, and supportive services throughout Los Angeles County for over 4 decades.

## **CEDARS-SINAI MEDICAL CENTER/ PSYCHOLOGICAL TRAUMA CENTER**

[www.cedars-sinai.org](http://www.cedars-sinai.org)

Offers a brief term art therapy group focused mental health program for children who have been impacted by stress and/or trauma. Individual and family therapy as well as Case management services are also provided as needed.

## **CHILD AND FAMILY GUIDANCE CENTER**

[www.childguidance.org](http://www.childguidance.org)

Services are provided based on the child's individual needs. They utilize a variety of highly effective evidence based practices (EBP's) in their outpatient programs. Child psychiatrists provide psychiatric services, including evaluation and medication monitoring. Intensive in-home case management services are offered in collaboration with your child's

treatment team. They specialize in linking families to community social services and school support. Wraparound is a family-centered, team and strength-based, needs driven planning process for high risk youth. This intensive home based program serves children and youth who are at risk of out of home placement or are returning home from placement.

## **CHILDREN'S INSTITUTE INC.**

[www.childrensstitute.org](http://www.childrensstitute.org)

Provides early education, behavioral health and family strengthening services to children and families.

## **CHILDREN'S BUREAU OF SOUTHERN CALIFORNIA**

[www.all4kids.org](http://www.all4kids.org)

Geared toward helping young children and their families find ways to decrease potential outbursts and violence in the home and to meet their mental health needs. Children's Bureau provides a wide range of counseling for kids and mental health services including a comprehensive assessment, child abuse therapy, family focused therapy, individual counseling, and group therapy. Intensive day treatment for young children, medication management, case management assistance, therapeutic behavioral health services, as well as assistance to the significant caretakers and support person(s) in the child's life are all offered at their mental health counseling center.

## **DREW CHILD DEVELOPMENT CORPORATION**

[www.drewcdc.org](http://www.drewcdc.org)

Provides a range of comprehensive mental health services for emotionally disturbed children and youth between the ages of 0 and 18.

# MENTAL HEALTH SERVICES

---

## **CHILDREN'S HOSPITAL LOS ANGELES (CHLA Division of Adolescent and Young Adult Medicine)**

[www.chla.org/adolescent-and-young-adult-medicine](http://www.chla.org/adolescent-and-young-adult-medicine)

Promotes healthy futures by attending to the physical, emotional, and social needs of young people ages 12 to 25. Board Certified Adolescent Medicine Specialists (from the field of pediatrics, family medicine, and internal medicine) focus on health promotion, treatment and prevention using a model of positive youth development. An interdisciplinary team of psychologists, social workers, health educators, and other professionals collaborate with their physicians and nurses to support the health and wellbeing of young people.

## **COMMUNITY FAMILY GUIDANCE CENTER**

[www.cfgcenter.com](http://www.cfgcenter.com)

Offers a broad range of outpatient mental health services that employ Best Practices to support a client's journey to wellness through the integration of evidence-based programs focusing on prevention, early intervention, and treatment services. They focus on children, adolescents, and transition-age-youth and their families who are high-risk, low-income, and living in underserved areas throughout Southeast Los Angeles County.

## **COUNSELING4KIDS**

[www.counseling4kids.org](http://www.counseling4kids.org)

Counseling4Kids provides effective mental health services to at risk children and youth in local school districts. They provide parenting classes, case management, and individual rehab services in adjunct to mental health services provided by licensed clinicians. The goal of their school program is to minimize the effects of trauma, assist parents in increasing effective communication, and to provide comprehensive services to children and their families in the community.

## **CRITTENTON SERVICES FOR CHILDREN AND FAMILIES**

[www.crittentonsocal.org](http://www.crittentonsocal.org)

A highly qualified and dedicated team of mental health professionals that are assigned to coach and provide assistance to the children, youth and families we serve. Whether they are working with an individual, an entire family, or students in a school-based setting, they will ensure that all services provided are delivered in a professional and compassionate manner.

## **DIDI HIRSCH PSYCHIATRIC SERVICE DBA DIDI HIRSCH MENTAL HEALTH SERVICES**

[www.didihirsch.org](http://www.didihirsch.org)

Didi Hirsch Mental Health Services has been providing quality mental health and substance abuse treatment in Southern California since 1942.

## **DIGNITY HEALTH-CALIFORNIA HOSPITAL MEDICAL CENTER**

[www.dignityhealth.org/socal/locations/californiahospital](http://www.dignityhealth.org/socal/locations/californiahospital)

They define health as more than an absence of disease. They believe caring for the whole person and realizing whole health is best achieved by providing for the physical, mental, spiritual and social needs of every patient they see.

## **EDELMAN CHILDREN'S MENTAL HEALTH CENTER**

[www.nfrc.ucla.edu/edelman-childrens-mental-health](http://www.nfrc.ucla.edu/edelman-childrens-mental-health)

Mental health services provided include assessments, case management, crisis intervention, medication support, peer support and other rehabilitative services. Services are provided in multiple settings including residential facilities, clinics, schools, juvenile halls and camps.

# MENTAL HEALTH SERVICES

---

## **EL CENTRO DE AMISTAD, INC.**

[www.elcentrodeamistad.com](http://www.elcentrodeamistad.com)

El Centro de Amistad, Inc., is a multilingual, cross cultural organization providing a comprehensive range of mental health services, anticipating the ever-changing needs of families and individuals in the San Fernando Valley. El Centro de Amistad, Inc. is committed to assisting children, adults and families.

## **EL CENTRO DEL PUEBLO**

[www.ecdpla.org](http://www.ecdpla.org)

El Centro del Pueblo's mission is to provide social services such as counseling, drug prevention, social rehabilitation, employment, outreach, education, health services, HIV/AIDS education and prevention services and youth services in an effort to improve the quality of life of the diverse communities of Los Angeles County.

## **ENKI HEALTH & RESEARCH SYSTEMS, INC.**

[www.ehrs.com](http://www.ehrs.com)

With the goal of promoting early detection and increasing access to mental health services, these services are provided at various school sites. By working in partnership with the schools, treatment is provided to the child in a coordinated and effective manner.

## **EXCEPTIONAL CHILDREN'S FOUNDATION**

[www.ecf.net](http://www.ecf.net)

Offers school-based, comprehensive mental health services to children and adolescents who are struggling with a variety of issues, including trauma, depression, anxiety and behavioral problems.

## **FIVE ACRES**

[www.5acres.org/deaf-services](http://www.5acres.org/deaf-services)

Provides mental health services tailored to the culture and language of deaf children and adults (ages 0–65+) who reside within Los Angeles County.

- Direct cultural and linguistic therapeutic services in the following languages: American Sign Language, English and Spanish. ASL-English-Spanish or ASL interpreters are used during family therapy sessions to ensure language is not a barrier to healing
- Individual and family therapy with deaf children and adults in their homes, schools or community to support strong mental health
- Treatment using a team approach, utilizing psychiatric services and medication management to compliment therapeutic treatment
- Case management with referral assistance to link you with additional services
- Rehabilitation services to help individuals master coping and social skills to promote healthy living and mental wellness

## **GATEWAYS CHILD AND ADOLESCENT OUTPATIENT SERVICES**

[www.gatewayshospital.org/outpatient-programs](http://www.gatewayshospital.org/outpatient-programs)

Offers an array of comprehensive mental health services for children, Adolescents, transitional aged youth, and adults suffering from mental illness.

## **HAZEL HEALTH**

[www.hazel.co](http://www.hazel.co)

Supports students with access to telehealth care at school. Hazel Health has partnered with LACOE and LA Schools to bring telehealth mental health services at no cost for every family.



# MENTAL HEALTH SERVICES

---

## HILLSIDES

[www.hillsides.org](http://www.hillsides.org)

Hillsides has five core programs that offer a depth and breadth of innovative services for at-risk children and their families. Their integrated team of experts works together to provide the highest quality care and treatment to achieve positive, lasting change. Programs are widely known and respected in the child welfare community: Residential Treatment Services. They provide a safe and stable environment for children and youth who cannot live at home, who have suffered trauma, or who have severe emotional, psychological, and behavioral challenges requiring specialized care and treatment.

## INSTITUTE FOR MULTICULTURAL COUNSELING AND EDUCATION SERVICES (IMCES)

[www.imces.org/services-programs](http://www.imces.org/services-programs)

Committed to reaching the school-aged, ethnically diverse populations in the community within the convenience of their schools. The program is designed to reach children as early as possible and deliver the goals of the Early Periodic Screening, Diagnostic, and Treatment program. Able to reach children in need of prevention and intervention in order to protect them from high risk factors that may detract to their healthy development. Students are referred by the school psychologist, the PSA counselor, or any administrator who has been designated as the referral source at the school.

## JOE TORRE SAFE AT HOME FOUNDATION

[www.joetorre.org](http://www.joetorre.org)

Provides comprehensive mental health services through their multi-faceted school-based program with the understanding that protective factors can decrease or mitigate the harm associated with exposure to violence and complex trauma.

## INSTITUTE FOR THE REDESIGN OF LEARNING DBA: ALMANSOR CLINICAL SERVICES

[www.redesignlearning.org](http://www.redesignlearning.org)

Offers a full array of therapeutic services for children, youth, and young adults ages 3-22 years. Almansor Mental Health Services contracts with the L.A. County Department of Mental Health and other agencies, and strives to empower clients and families to “take charge” of their own success. Services are offered in English, Spanish, Cantonese, Mandarin, and Vietnamese; cultural sensitivity is emphasized.

## KAISER PERMANENTE WATTS COUNSELING AND LEARNING CENTER

[www.community.kp.org/about/program/watts-counseling-and-learning-center](http://www.community.kp.org/about/program/watts-counseling-and-learning-center)

Provides individual and group therapy in English/Spanish and specialized support for children whose families are experiencing life threatening terminal illnesses.

## KEDREN COMMUNITY HEALTH CENTER, INC.

[www.kedren.org](http://www.kedren.org)

Provides mental health care and general medical care, in order to address comprehensive wellness and a collaborative treatment among physicians for optimal patient care. Kedren’s holistic integrated delivery system allows for optimal success as the pillars of a healthy community are centrally located on one campus.



# MENTAL HEALTH SERVICES

---

## KOREATOWN YOUTH & COMMUNITY CENTER

[www.kyccla.org](http://www.kyccla.org)

Holistic approach to mental health is supported by their multiservice agency—they house more than 20 programs—and their wide network of longstanding partnerships with community agencies. Offers short-term programs, help clients transition into recovery, and serve participants who may be beyond the scope of traditional outpatient services. They provide medication management, individual and family-based case management, child abuse prevention and intervention, and parenting education.

## MASADA HOMES

[www.masadahomes.org](http://www.masadahomes.org)

Their mission is to build a foundation for youth and families by providing quality vocational, mental health and substance abuse services.

## NATIONAL ALLIANCE ON MENTAL ILLNESS (NAMI) URBAN LOS ANGELES & NAMI GREATER LOS ANGELES

[www.namiurbanla.org](http://www.namiurbanla.org)

[www.namiglac.org](http://www.namiglac.org)

NAMI provides mental health awareness and suicide prevention to middle and high schoolers utilizing the Ending the Silence curriculum. Presentations may also be made to staff and parents. NAMI also provides resources to include information about education classes, support groups, including agency information available in the community.

## NEW DIRECTIONS FOR YOUTH (NDY)

[www.ndfy.org](http://www.ndfy.org)

A comprehensive youth development agency that provides mental health services and programs to more than 3,000 at-risk youth and families annually. NDY has provided critically needed services to more than 200,000 youth, the majority of whom come from

very low-income families residing in underserved geographic areas including North Hollywood, Van Nuys, Panorama City, North Hills, the economic Enterprise Zone of Pacoima, Sun Valley, and contiguous areas.

## OPEN PATHS

[www.openpaths.org](http://www.openpaths.org)

Counseling services provided to individual and families at affordable fees; free therapy programs for at-risk children and youth in local schools.

## OPTIMIST BOYS HOME & RANCH, INC./DBA: OPTIMIST YOUTH HOMES AND FAMILY SERVICES

[www.oyhfs.org](http://www.oyhfs.org)

Provides extensive individual, group and family therapy; education; recreation and athletic activities; healthcare programs; participation in community activities, vocational and emancipation training; cultural arts; case management, substance abuse treatment, mentoring, LGBTQ services, and ancillary therapy programs for 700 children and families each day.

## OUR HOUSE GRIEF SUPPORT CENTER

[www.ourhouse-grief.org](http://www.ourhouse-grief.org)

The mission is to provide the community with grief support services, education, resources, and hope. Since 1993, OUR HOUSE has helped thousands of grieving children, teens, and adults as they embark upon their journeys to hope and healing.

## PACIFIC ASIAN COUNSELING SERVICES

[www.pacsla.org](http://www.pacsla.org)

They provide an array of mental health services that are culturally sensitive and linguistically appropriate to respond to the diversity of our clients. They are dedicated to healing people with mental illness through counseling and caring.

# MENTAL HEALTH SERVICES

---

## **PACIFIC CLINICS**

[www.pacificclinics.org](http://www.pacificclinics.org)

Serves children, transitional age youth, families, adults, and older adults. They offer mental health, substance use treatment, and supportive services to Medi-Cal eligible individuals and families. Their diverse staff provides culturally and linguistically relevant services in over 14 languages to our region's culturally and ethnically diverse populations.

## **PARA LOS NIÑOS MENTAL HEALTH (PLN)**

[www.paralosninos.org](http://www.paralosninos.org)

They are committed to the emotional, social and cognitive development of children and youth who are school age. Through a team of clinicians, specialists, case managers, family advocates and parent partners, PLN partners with parents and teachers to support young children as they learn and implement new coping strategies to develop the necessary skills to create meaningful relationships and develop academically. PLN supports these children, youth and their parents through social skills and parenting classes, substance abuse education and support, in-home counseling, case management, mental health counseling, and classroom and teacher support.

## **PATHWAYS COMMUNITY SERVICES**

[www.pathways.com](http://www.pathways.com)

Pathways treats children who have faced repeated obstacles in their lives due to a broad spectrum of social, emotional, behavioral, and learning challenges; such as depression and bipolar disorders, autism spectrum disorder, anxiety, loss, and trauma.

## **PEACE OVER VIOLENCE (POV)**

[www.peaceoverviolence.org](http://www.peaceoverviolence.org)

Peace Over Violence offers school-based and crisis counseling intervention, individual counseling, and

family counseling. Peace Over Violence also offers parent workshops on domestic violence, child sexual abuse awareness, and Commercial Sexual Exploitation of Children (CSEC).

## **PENNY LANE CENTERS**

[www.pennylane.org](http://www.pennylane.org)

Welcomes all clients regardless of gender, race, age, religion, disability, marital status, ethnic background, sexual orientation, gender identity and gender expression. Staff also works proactively with the families and caregivers in order to develop a plan that works for both the child and the family to address the child's mental health needs.

## **PHOENIX HOUSE**

[www.phoenixhouse.org](http://www.phoenixhouse.org)

Committed to treating the whole person – and their families – with caring, qualified professionals in the fields of psychiatry, medicine, mental health, social work, education, and recovery support. Their team of experts address underlying causes of substance abuse and behavioral patterns to guide patients toward lasting recovery. As a leading nonprofit treatment provider, they offer affordable evidence-based care to teens, adults, and families, as well as unique programming for mothers with young children and the military community.

## **PROVIDENCE SAINT JOHN'S CHILD & FAMILY DEVELOPMENT**

[www.california.providence.org/saint-johns/services/child-and-family-development](http://www.california.providence.org/saint-johns/services/child-and-family-development)

Children with developmental disabilities, emotional challenges, encounters with domestic violence, substance or physical abuse receive assistance through one of the many programs and services available. Services are provided within the center, on school sites, in the home and in the community.

# MENTAL HEALTH SERVICES

---

## **SAN FERNANDO VALLEY COMMUNITY MENTAL HEALTH CENTER, INC.**

[www.movinglivesforward.org](http://www.movinglivesforward.org)

A full range of child and adolescent programs serving youth of all ages. Services include a full range of therapeutic, outpatient, prevention and early intervention, as well as evidence-based services.

## **SHIELDS FOR FAMILIES**

[www.shieldsforfamilies.org](http://www.shieldsforfamilies.org)

Provide individuals seeking treatment for alcohol and drugs, mental health, and/or domestic violence with screening, clinical assessment, treatment matching and linkage to services.

## **SOUTHERN CALIFORNIA COUNSELING CENTER**

[www.sccc-la.org](http://www.sccc-la.org)

Provides a range of mental health care services, including individual, family, and group counseling as well as school-based services. There are also treatment options for patients who suffer from anger and depression.

## **SPECIAL SERVICE FOR GROUPS (SSG)**

[www.ssg.org](http://www.ssg.org)

Mental health programs are designed to decrease mental health disparities and improve the quality of life for vulnerable populations. A variety of programs offer innovative, comprehensive and culturally appropriate services to advance the wellness of diverse communities.

## **ST. JOHN'S WELL CHILD & FAMILY CENTER**

[www.wellchild.org](http://www.wellchild.org)

An independent 501(c)(3) community health center. They serve patients of all ages through a network of Federally Qualified Health Centers and school-based

clinics that span the breadth of Central and South Los Angeles and Compton. In addition to providing a broad array of primary care services, they place a high priority on developing supportive services to address families' educational, socio-economic, and mental health needs.

## **STIRLING ACADEMY, INC.**

[www.stirlingbhi.org](http://www.stirlingbhi.org)

SBHS provides the highest quality of psychiatric and psychological services for individuals and it is staffed by board certified psychiatrists, licensed clinical psychologists, and licensed masters-level clinicians.

## **TARZANA TREATMENT CENTERS, INC.**

[www.tarzanatc.org](http://www.tarzanatc.org)

Dedicated to providing professional health care that treats each person with compassion and according to their assessed individual needs for improved physical and mental wellbeing. They provide whole-person healthcare through their integrated programs of primary medical and behavioral healthcare including inpatient medical detoxification and psychiatric stabilization, residential and outpatient substance use disorder treatment, outpatient mental health, and residential rehab for teens / youth and adults, primary care clinics, and HIV/AIDS services including specialty medical care.

## **THE ANTIOCH UNIVERSITY COUNSELING CENTER**

[www.antioch.edu](http://www.antioch.edu)

A community counseling center providing psychotherapy and counseling services to individuals, couples, families, and groups, serving adults, adolescents and children. Our outreach programs include our School-Based Program, in which we provide these services to local K-12 students on their school campuses at no cost to their families.

# MENTAL HEALTH SERVICES

---

## **THE CENTER FOR INDIVIDUAL & FAMILY COUNSELING (CIFTC)**

[www.ciftcounseling.com](http://www.ciftcounseling.com)

A 501(c)3, non-profit organization. For more than 25 years, CIFTC has provided care and support to the local community. With five offices throughout Southern California and more than fifty therapists, CIFTC is well-positioned to help meet the emotional, spiritual, relational and psychological needs of those served. CIFTC counseling centers are designed to offer a personalized approach to therapy and are well equipped to meet unique needs, providing trustworthy and competent care.

## **THE GUIDANCE CENTER**

[www.guidance-center.org](http://www.guidance-center.org)

The agency operates a wide range of programs and services at 23 locations. Their expertise in mental health and wellness, early childhood education, free preschool for low-income families, developmental disabilities services and support, mentoring, substance abuse, and workforce development.

## **THE HELP GROUP CHILD & FAMILY CENTER**

[www.thehelpgroup.org](http://www.thehelpgroup.org)

Founded in 1975, The Help Group is the largest, most innovative and comprehensive nonprofit of its kind in the United States serving children, adolescents and young adults with special needs related to autism spectrum disorder, learning disabilities, ADHD, developmental delays, abuse and emotional challenges. The Help Group, through its many specialized clinical and educational programs, provides assistance to children and families within their communities through its Child and Family Center therapeutic and educational programs.

## **THE SYCAMORES**

[www.sycamores.org](http://www.sycamores.org)

Offers integrated dual diagnosis treatment for youth struggling with both a mental health condition as well as substance abuse. The Co-Occurring Department

has certified chemical dependency counselors as well as mental health professionals working together to provide integrated treatment to this population.

## **THE VILLAGE FAMILY SERVICES**

[www.thevillagefs.org](http://www.thevillagefs.org)

Offers an array of comprehensive programs and services that work in concert to break the cycle of abuse and neglect and set families on a path to healing.

## **UNIVERSITY MUSLIM MEDICAL ASSOCIATION COMMUNITY HEALTH CLINIC (UMMA)**

[www.ummaclinic.org](http://www.ummaclinic.org)

Emphasizes the need for regular health maintenance visits, which include routine prevention screenings, immunizations, and wellness evaluations. Patients are provided education and support to optimize their total health and well-being. In most cases, patients are evaluated by a regular primary care provider, and typically provided any necessary medication at either no cost or low cost depending upon their ability to pay. If a patient requires more advanced tests or specialty care, UMMA will provide an in-house referral to our volunteer specialists or a referral to a local county medical facility.

## **UNITED AMERICAN INDIAN INVOLVEMENT CENTER**

[www.uaii.org](http://www.uaii.org)

A 501(c)3 private, non-profit organization offering a wide array of health and human services to American Indians/Alaskan Native (AIAN) living throughout Los Angeles County. UAI has grown from a small community-based organization providing social services to AIAN living in the Skid Row area within the City of Los Angeles, to a multidisciplinary comprehensive service center meeting the multiple needs of AIAN countywide. The agency also provides substance abuse treatment and Youth Development activities.

# MENTAL HEALTH SERVICES

---

## UPLIFT FAMILY SERVICES

(Families First, Inc. dba EMQ/Hollygrove)

[www.upliftfs.org](http://www.upliftfs.org)

Offers one of the largest, most comprehensive behavioral and mental health treatment programs for children and family members recovering from trauma such as abuse, severe neglect, addiction and poverty. Mental health services use a strength-based approach to define and individualize services, maintaining respect and sensitivity for the client's social and cultural background. Certified bilingual staff is available.

## VALLEY COMMUNITY HEALTHCARE

[www.valleycommunityhealthcare.org](http://www.valleycommunityhealthcare.org)

Provides general medical care, dental care, optometry, women's health, prenatal care, pediatric care, teen health, behavioral health services, and longer-term counseling.

## VIOLENCE INTERVENTION PROGRAM, INC. - CMHC (VIP)

[www.violenceinterventionprogram.org](http://www.violenceinterventionprogram.org)

VIP has a vibrant and growing school-based therapy program, delivering services right where children often need it the most; at their school. Through strengthening relationships with administrators and providing a much needed layer of support, their clinicians are utilizing area schools to be better aware of positive mental health and serve as a stronger support structure for their students.

## VISTA DEL MAR CHILD AND FAMILY SERVICES

[www.vistadelmar.org](http://www.vistadelmar.org)

Range of mental health and wellness services integrate concepts of psychodynamic and relational therapy and evidence based practices to help clients develop effective problem solving skills, manage behaviors, establish positive relationships, and achieve academic success.

## WEBER COMMUNITY CLINIC CENTER

(HOPICS Family Center/Special Service for Groups)

[www.ssg.org/programs-and-services/children-youth-families](http://www.ssg.org/programs-and-services/children-youth-families)

Provides comprehensive outpatient mental health and substance abuse services to youth aged 0-21. The program targets at risk children and youth residing in Service Area 6 of Los Angeles County. All services are offered in English and Spanish. Probation referrals are welcome and community service opportunities are provided free of charge.

## WELLNEST

(Emotional Health and Wellness)

[www.wellnestla.org](http://www.wellnestla.org)

Behavioral counseling and support are provided through an array of programs designed to empower children and help them reach goals in school, build healthy relationships and enjoy emotional well-being.

## WHITE MEMORIAL COMMUNITY HEALTH CENTER (WMCHC)

[www.wmchealthcenter.org](http://www.wmchealthcenter.org)

WMCHC understand that emotional wellbeing can have a significant impact on physical health. Knowing this, they have fully integrated behavioral healthcare services into their comprehensive primary healthcare program. Trained and certified behavioral specialists care about our patients' mental wellbeing. Through individual and family therapy sessions, their specialists help patients of all ages to understand their mental health and empower them to live their life to the fullest potential.

# MENTORING SERVICES

---

## **BIG BROTHERS BIG SISTERS OF GREATER LOS ANGELES**

[www.bbbsla.org](http://www.bbbsla.org)

Free of charge mentoring services which matches volunteers (Bigs) with kids (Littles) facing adversity to provide professionally supported one-to-one mentoring.

## **BRIDGE BUILDERS FOUNDATION**

[www.bridgebuildersla.org](http://www.bridgebuildersla.org)

Bridge Builders seek to reduce the racial, social, and economic barriers to African American and People of Color by providing culturally relevant mentoring and leadership skills to students in K-12 with the “Thriving Under the Influence” program. The program is an asset-based program staffed by mentors who come from the communities they support.

## **CHILDREN YOUTH AND FAMILY COLLABORATIVE (CYFC)**

[www.cyfcla.org](http://www.cyfcla.org)

The goal of all CYFC™ services programs is to ensure our youth gain the skills, information and motivation necessary to receive their high school diploma and graduate from college or obtain employment to transition successfully into independent adulthood. CYFC™ services has designed an Academic, Remediation, Intervention, and Support Services Education Model for Foster Youth (A.R.I.S.S.E™) program, which provides tutoring, academic support, and support services for foster youth.

## **CHILDREN’S HOSPITAL LOS ANGELES DAYAM**

[www.chla.org/adolescent-and-young-adult-medicine](http://www.chla.org/adolescent-and-young-adult-medicine)

The Children’s Hospital Division of Adolescent and Young Adult Medicine (DAYAM) provides Young Men’s Health Group (YMHG) health education workshops to students age 16-18 focused on healthy masculinity. YMHG will be delivered through a 10 session curricula approved by the LAUSD HIV/AIDS Prevention Unit.

## **DETERMINED TO SUCCEED**

[www.dtsla.org](http://www.dtsla.org)

Provides comprehensive year-round academic, enrichment and social-emotional support and resources to highly motivated, low-income students to enable them to go to college.

## **EMILY SHANE FOUNDATION**

[www.emilyshane.org](http://www.emilyshane.org)

Individualized, intensive mentoring to struggling/failing middle school students in the mainstream classroom.

## **GARDENA POLICE DEPARTMENT–GARDENA JUVENILE JUSTICE & INTERVENTION PROGRAM**

[www.gardenapd.org/juvenile-justice-and-intervention-program](http://www.gardenapd.org/juvenile-justice-and-intervention-program)

To educate, support, and improve the lives of at-risk youth to become productive and contributing members of society.

## **GIRLS, INC. LA**

[www.girlsincla.org](http://www.girlsincla.org)

Girls Inc. of Los Angeles provides research-based programming to empower girls at critical stages in their development. There are three core components to Girls, Inc. programming. The first is academic engagement; to provide academic enrichment so girls increase their love of learning, improve performance in school and aspire to and plan education beyond high school. The second is healthy living; to teach healthy living so girls are able to make informed decisions, avoid risky behaviors and take charge of their health. The third is civic engagement; girls are given the opportunity to learn about and engage with a need the see at their individual school. Together they learn how to advocate for potential solutions.



# MENTORING SERVICES

---

## **GOOD CITY MENTORS**

[www.goodcitymentors.org](http://www.goodcitymentors.org)

Provides school-based mentoring services for the purpose of improving and enriching educational development to high school students, grades 9-12.

## **INNER CITY VISIONS**

[www.innercityvisions.org](http://www.innercityvisions.org)

Provides services such as prevention of the exploitation of vulnerable children and youth, gang prevention, mentoring and support for children and families living in high crime/gang infested areas.

## **INNER CITY STRUGGLE**

[www.innercitystruggle.org](http://www.innercitystruggle.org)

Provide academic services, mentoring, and support systems to students in their pathway to higher education by way of United Students and Sembrando Scholars.

## **KIDS HOPE USA – SAN FERNANDO VALLEY**

[www.kidshopeusa.org](http://www.kidshopeusa.org)

Kids Hope USA is a parachurch organization that helps to connect partner churches/institutions to public elementary schools providing structure, training, support, and resources. Through the Freedom Church Kids Hope USA mentoring program, elementary students meet once-a-week for one hour with a consistent mentor after school.

## **LAPD HOLLENBECK POLICE ACTIVITIES LEAGUE (PAL)**

[www.lapdhollenbeckpal.org](http://www.lapdhollenbeckpal.org)

Get It Straight is a 12-week delinquency prevention and intervention training program for youth ages 10 to 17. Parents are required to attend each weekly

session with their child. Participants are involved in a comprehensive curriculum combining classroom instruction, personal development, conflict resolution skills, and communication exercises.

## **LOS ANGELES BROTHERHOOD CRUSADE**

[www.brotherhoodcrusade.org](http://www.brotherhoodcrusade.org)

Provides culturally competent academic mentoring as well as youth workforce development training, linked learning opportunities (including internships and job shadowing), financial aid counseling and social emotional learning.

## **MOTIVATING OUR STUDENT THROUGH EXPERIENCE (MOSTE)**

[www.moste.org](http://www.moste.org)

To mentor and empower girls from underserved areas of LA County to become the next generation of college-educated women. MOSTe's vision is to develop women who are confident, career-focused agents of social change.

## **PEPPERDINE UNIVERSITY FOSTER GRANDPARENT PROGRAM**

[www.gsep.pepperdine.edu/foster-grandparent-program](http://www.gsep.pepperdine.edu/foster-grandparent-program)

The Foster Grandparent Program (FGP) offers a multigenerational approach to community volunteerism by giving older adults the opportunity to volunteer with youth ranging from infancy to 21 years of age. Foster Grandparents are mentors, tutors, and friends to children with exceptional needs or circumstances.



# MENTORING SERVICES

---

## **RAINBOW LABS**

[www.rainbowlabs.org](http://www.rainbowlabs.org)

Provides high school students with the opportunity to learn about the craft of storytelling and a platform to share their own stories in safe spaces with their peers using lessons they have developed. Participants will learn how to find, shape, and deliver their stories.

## **RAINBOW SERVICES**

[www.rainbowservicesdv.org](http://www.rainbowservicesdv.org)

Rainbow services is committed to helping all domestic violence survivors by providing a series of sessions to middle and high school student on the topic of building healthy relationships.

## **SOCIAL JUSTICE LEARNING INSTITUTE**

[www.sjli.org](http://www.sjli.org)

Promotes educational equity for youth in communities of color by offering a mentoring program which includes designing individual academic plans, ACT/ SAT preparation, positive identity development, and culturally responsive trainings.

## **SOUTHERN CALIFORNIA CROSSROADS**

[www.socalcrossroads.org](http://www.socalcrossroads.org)

Southern California Crossroads provides mentoring services to at-risk youth in grades 9-12 with a focus on students who have experienced trauma.

## **WHITAKER PEACE & DEVELOPMENT INITIATIVE (WPDI)**

[www.wpdi.org/program/youth-peacemaker-network](http://www.wpdi.org/program/youth-peacemaker-network)

WPDI has designed comprehensive Conflict Resolution Education (CRE) curriculum, designed to be adapted and taught to a wide variety of people in a diversity array of contexts. WPDI trains young leaders

from conflict and violence-affected places to mediate conflicts in their communities. WPDI also trains them to teach specific CRE modules in schools to children and teenagers.

## **WSP USA INC.**

[www.wsp.com/en-ca](http://www.wsp.com/en-ca)

WSP USA is part of a global engineering corporation. They offer a program which engages students in activities to encourage educational and career growth and inspire students to change the world. They support teachers in providing access for their students to real world engineering challenges and expertise.

## **YOUTH GUIDANCE: BECOMING A MAN PROGRAM**

[www.youth-guidance.org/bam-becoming-a-man](http://www.youth-guidance.org/bam-becoming-a-man)

Youth Guidance's Becoming A Man® program (BAM®) is a school-based mentoring program that guides young men in 7-12th grades to learn, internalize and practice social cognitive skills, make responsible decisions for their future and become positive members of their school and community.

## **YOUTH MENTORING CONNECTION**

[www.youthmentoring.org](http://www.youthmentoring.org)

Youth Mentoring Connection provides a no-cost innovative mentoring program for high school students. Students enrolled in the program will be matched with one volunteer from Viacom or HBO Company. Topics in mentoring sessions will include life skills, resource/career fairs, personality tests, goal setting, family night, and reaching for your dreams.

# NUTRITION EDUCATION

---

## **CALIFORNIA STATE UNIVERSITY, NORTHRIDGE/MARILYN MAGARAM CENTER**

[www.csun.edu/marilyn-magaram-center/  
champions-change-healthy-communities-  
initiative-overview](http://www.csun.edu/marilyn-magaram-center/champions-change-healthy-communities-initiative-overview)

This initiative supports efforts to reduce the prevalence of obesity and chronic diseases in SNAP-Ed eligible communities through a coordinated approach: nutrition and gardening education, community/stakeholder engagement and mobilization; and policy systems, and environmental changes. The Champions for Change Initiative is a three-year program that began its implementation in April 2017 and has as a goal to influence change to policy systems and the environment (PSE).

## **CEDARS-SINAI/HEALTHY HABITS PROGRAM**

[www.cedars-sinai.org/community/programs/  
healthy-habits.html](http://www.cedars-sinai.org/community/programs/healthy-habits.html)

As part of a strategic effort to combat childhood obesity, Cedars-Sinai is helping children and families learn about healthy eating and physical activity with programs reaching elementary and middle school students, parents of preschool children, and families in underserved communities.

## **COMMON THREADS**

[www.commonthreads.org](http://www.commonthreads.org)

Seeks to equip communities with information to make nutritious food choices wherever they live, work, learn, and play together. Common Threads implements programming that promotes, nutrition, healthy eating, and an overall healthy lifestyle for District employees and students.

## **SUSTAINABLE ECONOMIC ENTERPRISES OF LOS ANGELES**

(Bring the Farmer to the Classroom)

[www.seela.org](http://www.seela.org)

Provides educational presentations for students through the Bring the Farmer to Your School Program. Program presentation curriculum is focused on youth learning about specialty crops, agriculture, local urban farming, how crops grow, and the benefits of eating them and how to prepare them.

## **VOLUNTEERS OF AMERICA LOS ANGELES**

[www.voala.org](http://www.voala.org)

The Healthy Schools Meals Advocacy Project is a student lead project, in which students gain knowledge and awareness of school food policy and functionalities.

# SUBSTANCE ABUSE

---

## ASIAN AMERICAN DRUG ABUSE PROGRAM

[www.aadapinc.org](http://www.aadapinc.org)

A 501(c)3 non-profit organization dedicated to serving Asian Pacific Islanders and other underserved communities with substance abuse services throughout Los Angeles County. Programs and services are provided to all individuals regardless of race or ethnicity.

## CHILDREN'S HOSPITAL LOS ANGELES

[www.chla.org/adolescent-and-young-adult-medicine](http://www.chla.org/adolescent-and-young-adult-medicine)

The Division of Adolescent and Young Adult Medicine at Children's Hospital Los Angeles promotes healthy futures by attending to the physical, emotional, and social needs of young people ages 12 to 25. Their Board Certified Adolescent Medicine Specialists (from the field of pediatrics, family medicine, and internal medicine) focus on health promotion, treatment and prevention using a model of positive youth development. An interdisciplinary team of psychologists, social workers, health educators, and other professionals collaborate with their physicians and nurses to support the health and wellbeing of young people.

## DEPARTMENT OF PUBLIC HEALTH

[www.ausd.org/Page/18469](http://www.ausd.org/Page/18469)

L.A. Unified is proud to partner with the Los Angeles County Departments of Public Health and Mental Health, and Planned Parenthood of Los Angeles to host Student Wellbeing Centers on selected campuses throughout the District. These centers offer youth-focused health and wellness education and preventive health care that is accessible to young people on their high school campuses. Student Wellbeing Centers offer services to educate students for lifelong protective practices by addressing substance abuse prevention and control measures, reproductive health, social/emotional well-being, and youth leadership.

These spaces are youth-friendly and provide students with a safe, welcoming place where they will find caring adults, supportive peers, and integrated services.

## OPTIMIST YOUTH HOMES AND FAMILY SERVICES

[www.oyhfs.org](http://www.oyhfs.org)

Provide extensive individual, group and family therapy; education; recreation and athletic activities; healthcare programs; participation in community activities, vocational and emancipation training; cultural arts; case management, substance abuse treatment, mentoring, LGBTQ services, and ancillary therapy programs for 700 children and families each day.

## PHOENIX HOUSE

[www.phoenixhouse.org](http://www.phoenixhouse.org)

Is committed to treating the whole person — and their families — with caring, qualified professionals in the fields of psychiatry, medicine, mental health, social work, education, and recovery support. Their team of experts address underlying causes of substance abuse and behavioral patterns to guide patients toward lasting recovery. As a leading nonprofit treatment provider, they offer affordable evidence-based care to teens, adults, and families, as well as unique programming for mothers with young children and the military community.

## SUBSTANCE ABUSE

---

### **TARZANA TREATMENT CENTERS, INC.**

[www.tarzanatc.org](http://www.tarzanatc.org)

Tarzana Treatment Centers, Inc. is dedicated to providing professional health care that treats each person with compassion and according to their assessed individual needs for improved physical and mental wellbeing. They provide whole-person healthcare through their integrated programs of primary medical and behavioral healthcare including inpatient medical detoxification and psychiatric stabilization, residential and outpatient substance use disorder treatment, outpatient mental health, and residential rehab for teens / youth and adults, primary care clinics, and HIV/AIDS services including specialty medical care.

### **THE SYCAMORES**

[www.sycamores.org](http://www.sycamores.org)

Offers integrated dual diagnosis treatment for youth struggling with both a mental health condition as well as substance abuse. The Co-Occurring Department has certified chemical dependency counselors as well as mental health professionals working together to provide integrated treatment to this population.

### **WEBER COMMUNITY CLINIC CENTER**

(HOPICS Family Center/Special Service for Groups)

[www.ssg.org/programs-and-services/children-youth-families/](http://www.ssg.org/programs-and-services/children-youth-families/)

Provides comprehensive outpatient mental health and substance abuse services to youth aged 0-21. The program targets at risk children and youth residing in Service Area 6 of Los Angeles County. All services are offered in English and Spanish. Probation referrals are welcome and community service opportunities are provided free of charge.

## VISION SERVICES

---

### **HELEN KELLER INTERNATIONAL**

[www.hki.org](http://www.hki.org)

ChildSight® provides free in-school vision screenings and new prescription eyeglasses to children in high-poverty communities in California, Connecticut, New Jersey, New York and Ohio. The program fills a critical health services gap for children with limited to no access to quality basic health or vision care services.



[lausd.org/wellnessprograms](https://lausd.org/wellnessprograms)